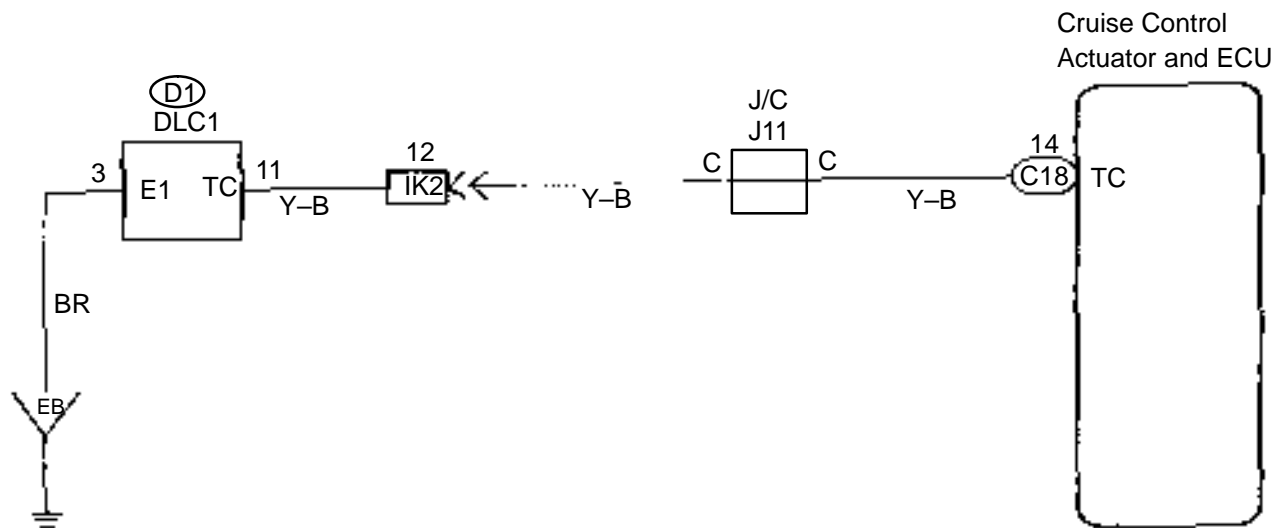


## Diagnosis Circuit

### CIRCUIT DESCRIPTION

This circuit sends a signal to the ECU that DTC output is required.

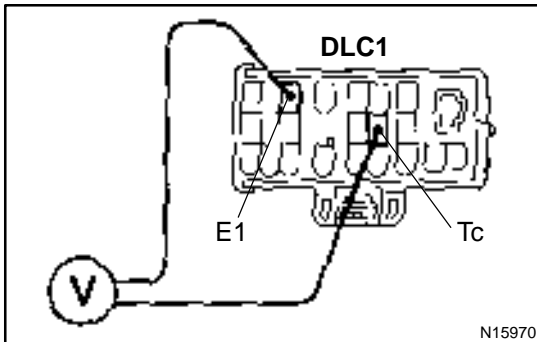
### WIRING DIAGRAM



I10252

**INSPECTION PROCEDURE**

- |          |  |
|----------|--|
| <b>1</b> | <b>Check voltage between terminals Tc and E<sub>1</sub> of DLC1.</b> |
|----------|--|

**CHECK:**

- (a) Turn the ignition switch ON.
- (b) Measure voltage between terminals Tc and E<sub>1</sub> of DLC1.

**OK:**

**Voltage: 10 – 14 V**

**OK**

**Proceed to next circuit inspection shown on problem symptoms table (See page [DI-621](#)).**

**NG**

- |          |   |
|----------|---|
| <b>2</b> | <b>Check harness and connector between cruise control actuator and ECU and DLC1, DLC1 and body ground (See page <a href="#">IN-28</a>).</b> |
|----------|---|

**NG**

**Repair or replace harness or connector.**

**OK**

**Check and replace cruise control actuator and ECU (See page [IN-28](#)).**